

Sussex Inlet District

VISITORS GUIDE

The perfect South Coast location for your holiday break

What's Inside

- Events
- Visitor Information
- Things to do
- Accommodation
- Places to Eat
- Places to Shop



What's Inside



3

Welcome
Explore Sussex Inlet and learn about our history.

7

Events
Regular and annual events, festivals, markets and more.

9

Visitor Information
Where to find information about Sussex Inlet.

11

Things you can do
Fishing, bushwalks, swimming, surfing, cycling, kayaking, water skiing, sailing or just relaxing.

21

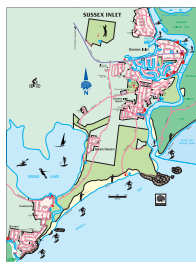
Places you can eat
From a quick bite to fine dining.

27

Places you can shop
Everything from groceries to hardware, clothing and more.

31

Trades & Services
Trades and services directory.



District Map
pages 23 & 24

Welcome to Sussex Inlet and Districts

Location

Sussex Inlet is located approximately half way between Nowra and Ulladulla. Situated on the coast Sussex Inlet village is actually an island which forms part of the Inlet to St Georges Basin from Wreck Bay in the Tasman Sea. The Island is connected by two bridges and there is only one road into the village which is a leisurely 15mins drive from the Princes Highway. The Sussex Inlet district comprises the villages of Sussex Inlet, South Sussex, Berrara, Cudmirrah, Swanhaven and Badgee.

As with most small towns Sussex Inlet has a long and interesting history.

Aboriginal History

Aboriginal people existed in the South Coast Region long before the sea rose to its current level and the Bherwerre Peninsula was created.

More than 100 pre historic Aboriginal sites have been recorded on the Bherwerre Peninsula, including shell middens, rock shelters, burial sites and ceremonial grounds.

Aboriginal people established camps where food and water was abundant and hunting and gathering was bountiful. The main sources of foods were yams, berries, and native animals such as kangaroos, possums and echidnas.

Prior to European occupation the area around Sussex Inlet was occupied by the Dhurga Aboriginal tribe who called the basin behind the Inlet Bherwerre and it was renowned for an abundant supply of fish.

Seafood has always been a major part of the diet of Dhurga people and oysters, abalone, pipis and mussels



Sussex Inlet is Jerringa country with Cullunghutti as the spiritual base

were easily found. Fish catches also proved plentiful with net fishing playing a major role in the lives of the people of Wreck Bay.

Today the Booderee National Park on the shores opposite Sussex Inlet are managed by the Wreck Bay Aboriginal community and there are many stories of a strong respect between the Aboriginal people and the Ellmoos family who shared their love of fishing and early boat building.

European Settlement

The first Europeans to walk through the area were survivors of the wreck the Sydney Cove in 1797. In 1827 the surveyor Thomas Florence travelled to St Georges Basin and mapped Sussex Inlet and noted the Dhurga Aboriginal name for the area was Bherwerre.

In the 1840's two brothers Richard and John Glanville with their families took a land grant at Berrara just south of Sussex Inlet and began clearing the land to encourage other settlers into the area. Located on a staging route which ran between Ulladulla and Nowra the fertile land and excellent fishing would soon bring dairy farmers and timber cutters to the area in the 1860's.

Although it was not named until the 1850s, Wreck Bay on the coastal side of Sussex Inlet was a notorious part of the coastline south of Sydney. At the time, Welbank's Nautical Almanac warned sea vessels to stay well clear of the coastline as ships were often swept into the bight and consequently grounded on large rock formations.

Grounded were the convict transport ship The Hive in 1835, and the Walter Hood in 1870, the deceptive and treacherous conditions would wreck over a dozen ships.

The Walter Hood was travelling from Melbourne with tiles for St Mary's Cathedral in Sydney when gale force winds at Red Head buffeted the ship into rocks at Wreck Bay. It would take a week for help to arrive, and the 13 passengers that died in the shipwreck are commemorated in a monument erected on Red Head later the same year.

Our Danish Connection

Sussex Inlet also has a Danish connection all thanks to an intrepid and adventurous Danish seaman, Jacob Ellmoos.

In 1878, Jacob was 15 years old when he arrived in Port Adelaide, South Australia and decided to travel north. He walked over 1,000 miles and eventually established himself at the South Head Signal Station, near Watsons Bay, in Sydney, which was then a fishing village.

Acquiring a seaworthy boat he sailed south, fishing the coastal waters and finally made his base at Cape St George lighthouse on the southern headland of Jervis Bay.

On a fishing trip in November 1880, he crossed the bar at the entrance of Sussex Inlet and thus began the Ellmoos family association with Sussex Inlet. He found rich fishing grounds and unspoilt beauty and soon sought and was granted a selection of 1200 acres of land on the northern bank of the inlet. So began the story of Sussex Inlet, originally named 'Sussex Haven' by Captain Cook on his epic journey of discovery.

Each year on the June long weekend we celebrate our Danish heritage with the Viking Festival. For more information on our history please go to our website: www.sussexinlet.nsw.au



Sussex Inlet

Originally settled in 1880, Sussex Inlet has grown from a small holiday village into a well-equipped community. Much of the town is built around a system of tidal canals, offering water panoramas and easy access for boating enthusiasts. There are ocean beaches just to the south and the broad expanse of St Georges Basin to the north.



Berrara

Berrara is a secluded coastal village that is lucky enough to be host to some of the best swimming water and beach fishing on the south coast.

There is a surf beach as well as a tidal lagoon for swimming and water sports.



Badgee

If you travel along River Road over the bridge to Badgee you will find homes overlooking the river and inlet foreshore reserves.

Abundant wildlife, including kangaroos can be seen in their own natural environment.



Cudmirrah

The small village of Cudmirrah is located a short drive away from Sussex Inlet, and is ideally positioned to take advantage of the stunning coastline with surfing, sailing, water skiing & mountain biking activities.



South Sussex

Down on the Inlet is South Sussex which leads to the entrance to the ocean. You will find Marine Rescue, caravan parks, cafes, marina and a boat ramp. A little further along is the Lions Park with a jetty and dump station for RV's.

Just around the corner is Pacificana Drive which will take you to Cudmirrah Beach, also known as Sussex Beach, the beach is patrolled during holiday season.



Swanhaven

Swan Lake has some stunning flora and fauna and home to a wide variety of bird life. The lake is brackish salt water and also plays host to a number of water activities including sailing, swimming, water skiing and fishing.

On the edge of the lake is an area set-aside for family recreation. It caters for young children to adults.



Golf Course Estate

Sussex Inlet Golf Village is a new masterplanned community surrounding the Sussex Inlet Golf Course.

The masterplan has been sensitively integrated into the existing landscape of the Sussex Inlet Golf Course. It utilises the existing bushland, waterways, beaches and all the associated activities that can be enjoyed by all ages.

Golf Course Estate includes 'Sussex Inlet Golf Village' and 'Golfcourse Way Village'



Events

JANUARY



Events through December to January each year. Come along and enjoy 'Summer at Sussex' with a great range of food, fun and music events.

FEBRUARY

SIBYC Annual Sailing Regatta

See the boats race with their spinnakers flying, new entrants and supporters always welcome. Held in February on St Georges Basin.

MARCH



Held on the last weekend in March. Come along and display your pride and joy, held on the pristine Sussex Inlet waterfront. To enter email: sussexinletclassiccarkulture@gmail.com

SIBYC Sailing Classic

Held in March on St Georges Basin.

MAY

B.R.O.E. - Fishing Classic

Held at the end of May. Stands for Beach, Rock, Ocean and Estuary. If you love fishing then try to win some of the \$5,000 cash and prizes. To enter email: sussexbowlo.fishingclub@hotmail.com



Winter@Sussex includes a range of events and promotion of Sussex Inlet as a winter short break location. Includes food events, art exhibitions, celebration of dance event and 5 Music@ Cinema events in partnership with Sword Fish Brewery and Sussex Cinema.



The Shoalhaven Autumn Celebration of Food

Takes place over six weeks from 1 May to the June long weekend. Join us in a celebration of everything that is Hospitality across all regions of the Shoalhaven. From long lunches, conversations, tastings, masterclasses to craft beer events, degustations, dinners, high teas, finishing with the celebrated Viking Festival Long Lunch at Sussex Inlet on the Sunday.

JUNE

Sussex Inlet Golf Club Open

Held in June at Sussex Inlet Golf Club, Golfcourse Way, Sussex Inlet.

Viking Festival - June Long Weekend

Celebrating the settlement of the area by Jacob Ellmoos and his family who came from Denmark. Viking Village, live music, rides and entertainment and fun for the whole family.

OCTOBER

The Annual Pink Night

Held in October, a fun filled Pink themed night to raise funds for the Sussex Inlet Cancer Support Group who provide all kinds of support to the local community.

NOVEMBER

Flatty Classic

Held in November. An honesty based catch and release competition. Target species Dusky Flathead. More info: sussexbowlo.fishingclub@hotmail.com

DECEMBER



MARKETS



2nd Saturday Monthly

Situated on the church grounds and the Lions Club Peace Park, Sussex Inlet. email: sussexinletcommunitymarket@gmail.com



JUNE
LONG
WEEKEND

FREE
Entertainment
all day with
Kids Zone Pass



Viking Village

Visit the viking village and experience how the vikings lived



Re-enactments

Watch the fierce battles and games that vikings played



Entertainment

Live music all day long on 2 stages + 2 Kids Zones



Enthralling Acts

Enjoy the antics of axe juggling, fire light & magic



Food & Wine

Enjoy the Viking Beer Garden and amazing range of food stalls

**For more information and to
purchase tickets visit:
vikingfestival.com.au**

N *E* SUSSEX INLET **EIGHBOURHOOD CENTRE**



Neighbourhood Centre Services

170 Jacobs Drive, Sussex Inlet

Health Bus - Centrelink Access Point - Tourism Information Services
Cancer Support Services - Community Support Services - Youth Services
Emergency Services - Community Events - Book a meeting room



Access Point

centrelink

Ph: 4441 2003



www.sussexneighbourhoodcentre.com.au



MARINE RESCUE SUSSEX INLET

24/7 emergency service for local & visiting boaters on our waterways



Log On with us as you head out on the water. It's quick & easy on VHF Channel 16 or the free MarineRescue App.



Log Off when you're back on shore. If you haven't made contact, we'll start to search for you.



Make sure everyone on board is wearing a lifejacket.



Check the conditions & weather before heading out.

**In an emergency,
call for help on
VHF Channel 16
Triple Zero (000)**

Marine Rescue Sussex Inlet. 30B Sussex Road, South Sussex Inlet
02 4441 3555. sussexinlet@marinerescuensw.com.au



Volunteers saving lives on the water

Things you can do

Local Walks

Chris Creek to Badgee Bridge

Start at the boat ramp at the end of River Road near Chris Creek bridge. Follow this path along the water past the RSL until you reach the Badgee bridge. You can continue over the bridge and walk around Badgee or return back to Chris Creek.

Badgee Bridge to the Surf Club

This walk can be shortened by starting at different points along the way. To do the entire walk is approximately 2-3 hours.

Start just before Badgee Bridge on River Road. Follow the path along the river towards the township. Pass the end of Jacobs Drive and continue past the RSL Club.

Continue your walk along the river to Chris Creek boat ramp, cross the Chris Creek bridge, continue up the hill past a rest seat at the corner of Ray Street. Straight ahead you are now on Lyons Road continue to Sussex Road and turn left towards the river.

Once you reach the river there is a small carpark at the Marine Rescue Centre with two cafes, Pelican Shores Café and Marina and Seacrest, a good point for a stop.

Continue your walk along the public river front reserve, through a small patch of mangroves and over a small boardwalk. Emerge onto the Bowling Club public reserve, follow the river and cross into the Lions Park.

From the Lions Park turn right into

Edgewater Avenue, follow the road to Pacificana Drive and turn left into Alamein Road. At the end of Alamein Road is a caravan park with a public reserve on the rivers edge.

Follow the track along the edge of the river which will lead you to the Alamein steps on your right. Climb the steps, stopping at various viewing spots along the way to admire our wonderful waterways. Emerge at Holiday Haven Cabins and reserve and follow the road to Pacificana Drive. Turn left into Pacificana Drive and this road will take you to the surf club.

Alamein to the Haven



Enter the Alamein Caravan park and walk along the public river reserve to the end of the park, on your right leading into the bushes you will find stairs that will lead you to the Haven.

There are quite a few steps on this walk so it might be a good idea to wear comfortable walking shoes.

Cudmirrah to Swanhaven (dog friendly)

Start at Cudmirrah Cafe opposite Errol Bond Reserve on Goonawarra Drive. Head across the reserve to the bridge. Cross the bridge and follow the community path to Swanhaven.

At the reserve at Swanhaven continue up the hill past the children's playground and follow Lake Drive on the left. Round the bend onto Hoffman Drive then first left onto Yarroma Ave which will take you back to the small boat ramp and reserve. *At the Swan Lake Ski Beach dogs are allowed off leash 4pm-8am October to April and 3pm-10am May to September.*



Retrace the path back to Cudmirrah Cafe and enjoy a well deserved coffee.
Time needed for this walk is 1 hour return.

Fisherman's Rock

Walk west along the bush path from the playground at Berrara Creek to Fisherman's Rock. During wet weather this track is impassable. This is a good steady walk with many varieties of flora and fauna to view.

Berrara Lagoon to the Mermaid Pool

Starting from Berrara Road car park head down onto Berrara Beach crossing the lagoon (low tide is best). From here it is a 1.5km walk along the beach to the rock shelf at the far end



where you will find Mermaids Pool. A rock pool big enough for the whole family to take a dip in!

Berrara Headland

Start at Cudmirrah Cafe opposite Errol Bond Reserve near the Cudmirrah Bridge. Head along Collier Drive to First Ave and the Community Hall. Turn left, pass the Fire Station and follow Koolyn Drive to the end of the park. Head across the park and pick up the track alongside the lake entrance.



Continue onto the beach and turn right. Walk along Kirby's beach to the rock platform at the end. Only at a very low tide it is possible to walk all the way around the Cove and rocks to Berrara Creek (it is well worth checking the tides before starting out). There are many rock pools to explore and also fossils to see.

Local Walks *(cont.)*

This area is part of the National Park and fossils must not be removed.

At Berrara Creek turn right and walk up to the road. Follow Berrara Road to Sixth Ave. Ahead is Fisherman's Rock Rd, a dirt road, going left. Cross this road at a large Cudmirrah National Park sign and walk 100 metres to a track leading off to the right. Follow this track back to Goonawarra Drive, turn right and finish at Cudmirrah Cafe for a well earned coffee.

Time needed for this walk 1-1.5 hours.

National Park Walks

Walk the beaches and the National Park to the Walter Hood Monument or all the way to Bendalong.

Walk or bicycle ride west into the National Park on the many dirt roads, paths, and fire trails.



Bike Tracks

Badgee Bridge to Chris Creek Bridge

This is a shared concrete pathway, with pedestrians, along the riverfront and is a great ride for the little ones on their bikes whilst you walk or ride with them.



Medlyn's Ave to Cudmirrah

This track starts from Medlyn's Ave and takes you all the way to Cudmirrah Cafe.

There are many bike and walking tracks in the national parks of the Sussex Inlet district.

BMX Track & Skate Park



These are both located at the Thomson Street Sporting Complex, Thomson Street Sussex Inlet.





Stunning water views, friendly staff, cold beer
and Award Winning Food!



TAB • Keno • Barefoot Bowls
Entertainment • Free WiFi • ATM
Raffles • Courtesy Bus • Bingo



Open 7 days

*lunch and dinner
and Breakfast Sat and Sun.*

St Georges Ave, Sussex Inlet NSW 2540

Phone: (02) 4441 2087

www.sussexbowlo.com.au

CLUBS

Sussex Inlet Bowling Club



St Georges Avenue, South Sussex
4441 2087

Sussex Inlet RSL Club



200 Jacobs Drive, Sussex Inlet
4441 2076

Sussex Inlet Golf Club



7 Golfcourse Way, Sussex Inlet
4441 2259

Fishing

Off the bank on the Inlet at the following Waterfront Reserves:

- Badgee Bridge Park
- Nielson Lane
- Jacobs Drive
- Chris Creek Bridge Park
- Marine Rescue Park
- Lions Park
- Berrara Creek Reserve
- Sandy beach entrance of the Inlet

OFF THE BEACH

- Bherwerre Beach
- Cudmirrah Beach, down from surf club
- Cudmirrah Beach, Swan Lake opening
- Kirby's Beach
- Berrara Beach

OFF THE ROCKS

- Cudmirrah Beach, rock shelf north of surf club
- Cudmirrah Beach, at Swan Lake opening
- Kirby's Beach headland
- Berrara Beach, Mermaid Pools

IN A BOAT

- **Fish all of the Inlet** – Swan Lake – Berrara Creek
- **St Georges Basin:** The Poles, Jewfish Bay, One Tree Bay, Artificial Reef

OUTSIDE FISHING

Cudmirrah Reef (*obtain local advice before crossing the bar to go ocean fishing*).

Please remember the size and bag limits for fishing (*catch and release anything you won't eat is always the best policy, it means we will have plenty of fish the next time we go*)

There is a wide and plentiful variety of fish in the Sussex Inlet District including:

Dusky Flathead

Legal lengths: 36cm - 70cm
Bag limit: 5 or 10 in possession
Where: Main River, Keys, St Georges Basin. Look for drop-offs
Good baits: Baitfish (live poddy mullet) but will take just about anything while drifting



Bream

Legal lengths: 25cm
Bag limit: 10 in total
Where: Main River, Keys, Beaches & St Georges Basin. Look for structure and jetties.
Good baits: Prawns (live is best), marine worms, small baitfish.



Whiting

Legal length: 27cm for Sand Whiting only
Bag limit: 20 in total
Where: Main Inlet, St Georges Basin.
Look for sand flats.
Good baits: Saltwater nippers, marine worms, peeled prawns



Snapper

Legal length: 30cm
Bag limit: 10
Where: St Georges Basin, the beach rocks and offshore
Good baits: Squid, prawns, fresh fish strips



Australian Salmon

Legal length: None
Bag limit: 5
Where: Beaches, dusk & dawn are best
Good baits: Pilchards (gang hook) and lures



For more fishing information visit Dale and his friendly staff at
Sussex Inlet Tackle & Toy Shop, 168 Jacobs Drive, Sussex Inlet 4441 1660

Kayak



Best locations are Swan Lake and Berrara Creek and the Inlet. It is also great to paddle around the pristine canals and waterways of Sussex Inlet or surf the beaches.

Sailing



Swan Lake and St Georges Basin

The Sussex Inlet Basin Yacht Club sail St Georges Basin in season and recreational sailing can be done on Swan Lake.

Snorkelling

The Cove Located at the end of Silversands Drive, Berrara. This is also a great place to view interesting examples of fossils along the rock shelves and rock pools.



Stand Up Paddle



Best locations are Swan Lake and Berrara Creek and the Inlet. It is also great to paddle around the pristine canals and waterways of Sussex Inlet or surf the beaches.

For SUP lessons contact Madeline Rayner - 0421 120 376

Surfing Spots

Taboo/Sussex Point

Located just before Sussex Surf Club & Beach is a dirt track on the left that will take you out to the far end of the beach. This spot is for advanced surfers.

Conneally's Reef/Cudmirrah

Located at the end of Third Ave, Cudmirrah. This spot is for intermediate surfers.

Berrara Beach

Located at the end of Berrara Road. Great spot for intermediate & beginner surfers.



Swimming Still Water

Medlyn's

Located at the end of Medlyn Avenue in the National Park is a small private beach which is great for children, it is sandy, shallow, slowly gets deeper and there are no waves.

Fisherman's Rock

At the end of Berrara Road, you will find a dirt track to the left going behind the houses on Sundowner Ave. At the end of the track there is a great swimming spot and jump rock which the big kids under supervision will love.

Berrara Lagoon

Situated on Lakeland Ave and also by Berrara Beach, the lagoon occasionally opens up to the ocean. It is great place for the little ones to paddle, swim and have some fun.

Mermaid Pool

This beautiful rock pool is located at the end of Berrara Beach.



It is a stunning walk and swimming spot for all to enjoy, especially for the little ones. The Mermaid Pool is at it's best during the high tide.

Sussex Inlet Aquatic Centre

Sussex Inlet Aquatic Centre is the perfect place to enjoy a swim or aqua aerobics classes.

The centre offers a range of facilities including a 25 metre heated indoor pool, sports shop, kiosk, inflatable obstacle ride, outdoor lawn and play area, inflatable party bookings are available. 21 Thomson Street, Sussex Inlet:

4406 2055



Swimming Beaches

Cudmirrah Beach - Sussex Inlet

Located at the end of Pacificana Drive Sussex Inlet. Here you will find the surf beach, beach lookout and the Sussex Inlet Surf Club, this beach is patrolled during holiday season.



Cudmirrah Beach

Swimming Beaches *(cont.)*

Cudmirrah Beach - Cudmirrah

Entry via Third Avenue off Collier Drive.
Cudmirrah *(not patrolled)*

Berrara Beach

Entry via Berrara Road, Berrara
(not patrolled)



Berrara Beach

Kirby's Beach

Entry via eastern end of Pope Ave,
Berrara *(not patrolled)*

The Cove

Entry via Silversands Drive, Berrara
(not patrolled)

Water Ski/Jet Ski

The best place for these sports is Swan Lake which is the location for many water activities, however St Georges Basin is also great for water sports as it is a large area with no speed limits. Please remember to observe the speed limits in the Inlet to preserve our environment and to protect your wallet from RMS fines.



Boat Ramps

Nielson Lane

Located at the end of Nielson near the main street and shops, this ramp has a single slipway suitable for medium sized boats. With a single jetty plus fish cleaning facilities, this is the closest ramp to St Georges Basin.

Chris Creek/Jacob Ellmoos Reserve

Situated off River Road, opposite Harbord Street, this single slipway is suitable for smaller boats. No jetty here so you will have to get your feet wet. Basic fishing cleaning facilities, no running water. A Good start to explore the Keys, canals and Ralph Lucas Waterways.

Lions Club Park



The largest boat ramp in the area, located at the end of Lakehaven Drive in South Sussex. There is a double slipway suitable for larger boats as well as two jetties and undercover fish cleaning facilities with running water. Launches straight into the main river and is the closest ramp to the ocean. A dump station for RV's is located at Lions Club Park.

Riverside

Situated at the end of Sussex Road in South Sussex this ramp is suitable for medium sized boats. No jetty or fish cleaning facilities.

Swan Lake

Two ramps launch into Swan Lake, a hotspot for water skiers. No jetties. The larger slipway is located off the Springs Road at Cudmirrah, and there is a smaller slipway in Swanhaven at the end of Yarroma Ave, this is only suitable for light craft/canoes.

BBQ's (or Fireplaces)

Berrara - Berrara Lagoon Reserve

Lakeland Ave

Cudmirrah – Errol Bond Reserve

Goonawarra Dr.

Sussex Inlet

Sussex Inlet Waterfront Reserve

opposite RSL Club - Jacobs Dr.

Sussex Inlet South

Sussex Inlet Lions Club Park

Edgewater Ave (a dump point for RV's is located at Lions Club Park)



Swanhaven - Dyball Beach Reserve

Yarroma Ave

Children's Playgrounds

Berrara Cove Reserve

Cnr Myrning Grove & Silver Sands Dr., Berrara

Berrara Lagoon Reserve

Lakeland Ave, Berrara

Dyball Reserve

Lake Drive, Swanhaven

Ellmoos Reserve

near Sussex Inlet RSL - Jacobs Dr, Sussex Inlet



Finkernagel Oval

Sandpiper Way, Sussex Inlet.

Jacob Ellmoos Reserve

near Chris Creek bridge - River Rd, Sussex Inlet

Sussex Inlet Lions Club Park

Lakehaven Dr., South Sussex (a dump point for RV's is located at Lions Club Park)



Skate Park

Thompson Street Complex, Thompson St, South Sussex

Third Avenue Reserve

Third Ave, Cudmirrah

Thomson St Sporting Complex

Thomson St, South Sussex

Places you can eat

Batesy's Fish and Chips

176 Jacobs Drive Sussex Inlet
Ph: 4441 0777 - Opening Hours: 9am to 8pm. Our local fish and chip shop offering a range of freshly cooked fish, chips, scallops, prawn cutlets and cold drinks.

Bean 2 Sussex

166 Jacobs Drive, Sussex Inlet
Ph: 4441 1435
Opening Hours: Sun - Thur 6:30am to 2pm - Fri - Sat 6:30am to 9:30pm.
Take Away and Eat in Options. Breakfast, lunch and dinner options - coffee, bacon and egg rolls, wraps, sandwiches, hamburgers, schnitzels, pasta, salads and cold drinks.

Dinh Hot Bread & Cake Shop

Open from 7:30am-4pm
1/183 Jacobs Dr Sussex Inlet
Ph: 4441 1385 - Rolls, bread, cakes, Vietnamese rolls and cold drinks.

Grazing Galz Kiosk and Catering

@ The Surfclub - Ph: 0421 752 203
email: thegrazinggalz@gmail.com
Take away and eat in options.
Specialising in grazing tables, platters and grazing boxes with cheeses, antipasto, dips and slices.

Inlet Butchery

181 Jacobs Drive, Sussex Inlet
Ph: 4441 2034 - Opening Hours: Mon - Sat 8am to 6pm. Great quality meat as well as cold meats, sauces and eggs. Pick up BBQ options and enjoy along the waterfront.



Pelican Shores
CAFE & MARINA

Food & Beverage • Parties & Functions

Fuel • Bait & Tackle • Boat Hire • Kayak Hire • Paddle Board Hire

28 Sussex Road, Sussex Inlet – Ph: 02 4441 3099

www.pelicanshorescafemarina.com.au



Inlet Eats

170 Jacobs Drive, Sussex Inlet
Ph: 4480 3043 - Opening Hours: Mon - Sun 7:30am to 3pm - Take away & eat in breakfast and lunch options. Coffee, bacon and egg rolls, quiche, salads, wraps, sandwiches & drinks.

Inlet Kebabs

179 Jacobs Drive, Sussex Inlet
Hrs Wed to Sunday 5-9pm.

Inlet Pizza House

170 Jacobs Drive, Sussex Inlet
Ph: 4441 0044
Opening Hours: Wed -Sun - 5pm to 8pm
Great range of pizza, pasta and garlic bread, cold drinks. Delivery available.

La Vespa

185 Jacobs Drive, Sussex Inlet
Ph: 0493 392 923 - 4441 0582
Opening Hours: 9am to 7pm
30 flavours of ice cream including dairy free options, coffee, bacon & egg rolls.

Ohana Café and Ice Creamery

168 Jacobs Drive - Coffee, ice cream and bacon and egg rolls.

Pelican Shores Café and Marina

28 Sussex Inlet Rd Sussex Inlet
Ph: 4441 3099
www.pelicanshorescafemarina.com.au
Opening Hours: Wed - Sun 8am to 5pm, Dinner Fri - Sat 6pm to 9pm, check website for holiday hours.

Riva Coffee Bar

1/191 Jacobs Dr Sussex Inlet
Ph: 0434 492 256 - Opening Hours: Mon-Sat - 9am-3pm - Coffee, cold drinks, salads, muffins & cakes.

Riviera Caravan Park Shop

158 River Rd Sussex Inlet
Ph: 4441 2112
Opening Hours: 8am to 4:30pm
Coffee, cold drinks, hot food and ice creams.

Seacrest General Store

30 Sussex Road, Sussex Inlet
Ph: 4441 2025 - Wed-Sun 7:30am to 2pm - Dinner Fri & Sat - 5pm - 8pm
Eat in and take away options including fish and chips, burgers, coffee & cakes.

Silver Spoon

185 Jacobs Drive, Sussex Inlet
Ph: 0481 485 801
Thai restaurant with takeaway options
Hrs Wed to Sun 11:30am - 2.30pm & 5-9pm. Tue 5-9pm.

Spar Supermarket

167 Jacobs Drive Sussex Inlet
Ph: 4441 2264 - Opening Hours: 7am to 7pm. Delicatessen, BBQ chickens, salads, bread rolls, fresh fruit and vegetables, butchery.

Sussex Inlet Bakery and Cafe

Open from 7:30am-4pm
169 Jacobs Drive Sussex Inlet
Ph: 4403 7732 - Rolls, bread, pies, cakes, coffee, sandwiches, Vietnamese rolls and cold drinks

Sussex Inlet Marine Centre

At the end of Jacobs Drive Sussex Inlet Ph: 4441 2086 - Opening Hours: 9am to 4pm. Pick up a coffee, a cold drink or an ice cream as you walk along the pathway at Ellmoos Reserve.

SwordFish Brewing

187D Jacobs drive - 4441 2268
300 seat restaurant right on the beautiful Sussex Inlet. Open Wednesday - Sunday 12pm - 9pm
email:info@swordfishbrewing.com.au
www.swordfishbrewing.com.au

Wicked Bites

193 Jacobs Drive, Sussex Inlet
Ph: 4441 0735
Open 6 days - closed Tuesday - From 5pm to late. Influences from Greek and Indian cuisines.



Printed copies of this map are available from
the Sussex Inlet Neighbourhood Centre

Beach & Lake Food

BERRARA CHALETs

At the reserve near beach chalets and beach parking area. Coffee and Food Vans at Reserve near Beach

Coffee, Donut and Food Vans

Coffee, donut and food vans on site at Berrara Chalets for the summer. Ring Berrara Chalets for info: Ph: 4441 2176



CUDMIRRAH

Cuddy Café and General Store

14 Goonawarra Drive, Cudmirrah

A great selection of breakfast and lunch options - including coffee, bacon and eggs, avocado on turkish, fish and chips, burgers, pizza, steak sandwiches, wraps, cold drinks and smoothies.

Opening Hours: 7.30am to 2pm

Pizza on Fri and Sat 5:30pm to 7pm

In holiday periods hours are extended check with cafe phone : 02 4441 3006

Island Sushi

Lakeside Caravan Park, Cudmirrah

Opening Hours: Thur-Sun 11am to 2pm

Amazing sushi poke bowls and other Island Sushi specials. Check islandsushi.com.au for updates.

We are here!

Lakeside

Yummy Yummy Island Sushi

Salmon Sushi-Poke Bowl

All Time Favorite

Sushi Poké

Teriyaki Chicken

Ramen

So much more!

Check Out

IslandSushi.com.au

Open Thurs-Sun 11am ~2pm

Mr & Mrs SUZUKI ORIGINAL CUISINE

SUSSEX INLET

your next destination!

ISLAND SUSHI SUMMER 2018

EAT

36 Goonawarra Dr., Cudmirrah t 2540@ Lakeside Cabins

f i

Pub & Club Food

Sussex Inlet Bowling Club

St Georges Ave, Sussex Inlet

Ph: 4441 2087

www.sussexbowlo.com.au

Opening Hours: Open 7 days a week.

Breakfast: Sat and Sun from 8am.

Lunch from 11:30am to 2:15pm. Dinner from 5:30pm

Sussex Inlet RSL Club

200 Jacobs Drive, Sussex Inlet

Ph: 4441 1354

www.sussexrslclub.net.au

Opening Hours: Open 7 days a week.

Lunch: 12pm to 2pm

Dinner: Mon/Tue 5:30pm to 8pm

Wed - Sun 5:30pm to 8:30pm

Sussex Inlet Tavern

191 River Rd, Sussex Inlet

Ph: 4441 0391

Opening Hours: Open 7 days a week for Lunch & Dinner

www.facebook.com/SussexTavern

SwordFish Brewing

187D Jacobs drive - 4441 2268

300 seat restaurant right on the beautiful Sussex Inlet. Open

Wednesday - Sunday 12pm - 9pm

email:info@swordfishbrewing.com.au

www.swordfishbrewing.com.au



SWORDFISH
BREWING

187D Jacobs Drive, Sussex Inlet NSW
Open Wednesday — Sunday 12pm - 9pm

(02) 4441 2268

www.swordfishbrewing.com.au



Places you can shop

Alcohol

Cellar Hill Bottleshop

165 Jacobs Drive - 4441 1174
A wide range of Australian boutique wines, imported spirits, champagnes, ciders and beer. During the summer months purchase Greenwell Point fresh oysters. Open 9am to 6pm Sunday to Thursday, Friday and Saturday 9am to 8pm.



Sussex Inlet Tavern

(& Bottle Shop)
Cnr River Rd & Ellmoos Ave
Tavern & Drive through bottle shop
4441 0391



Boutiques and Gifts

Sahara Boutique

1/191 Jacobs Drive, Sussex Inlet
Ph: 0434 492 256

Squirrel Trading Co

196 Jacobs Drive (near post office)
gifts, homewares & plants
Debbie - 0435 516 803

The Inlet Spot Arts & Crafts

Nielson Rd - 0408 565 520
www.sussexinlet.info/theinletspot
Quality locally handmade arts & crafts

Thingamabob's Place

4/183 River Rd (left 2nd R/about)
Kids, Ladies, Mens & Resort style
clothing. Homewares - Tilley/
Woodwick candles, Giftware and
Sussex Souvenirs
02 4441 0488



Sahara Boutique
An eclectic range of couture



Ph: 0434 492 256

Fishing and Boating

Bosun Wholesale

Chandlery, safety equipment, electronics, navigation equipment, stainless steel fastenings, trailer equipment - hrs - 8am to 4.30 Monday to Friday - 4441 2791

Pelican Shores Café & Marina

28 Sussex Road
4441 3099 – 0478 044 737
Petrol, fishing tackle, boat hire

Riviera Kiosk

158 River Rd (along cycleway)
bait, fishing tackle - 4441 2112

Seacrest Cafe & Takeaway

1 Sussex Rd - Food, lollies, bait
4441 2025

Sussex Inlet Marine Centre

The river end of Jacobs Dr. (opp RSL)
Petrol, fishing tackle, kiosk, boat hire, SUP hire, kayak hire etc. - 4441 2086

Sussex Tackle Shop & Toy Box

168 Jacobs Dr - Ph: (02) 4441 1660
Bait, fishing tackle and equipment, toys, games and more.

Fuel / Marine Supplies

Cudmirrah General Store, Café & Woodfire Pizzeria

14 Goonawarra Dr. - Groceries, bait, petrol, café. - 4441 3006

Pelican Shores Café & Marina

28 Sussex Road
4441 3099 – 0478 044 737
Petrol, fishing tackle, boat hire

Sussex Inlet Service Station

1 Jacobs Dr. Petrol, oil, bait, groceries, newspapers. - 4441 2193

Sussex Inlet Marine Centre

The river end of Jacobs Dr. (opp RSL)
Petrol, fishing tackle, kiosk, boat hire, SUP hire, kayak hire etc. - 4441 2086

Hardware/Building Supplies

Sussex Inlet Hardware & Building Supplies

191 Jacobs Dr. - 4441 1200
www.thriftylink.com.au/store/sussex_inlet

Mechanical

Moby's Mobile Mechanical Repairs

Jamie Moberget - 0412 301 967
mobysmechanical@gmail.com

Sussex Inlet Mechanical Services

2/4 Flood Avenue
4441 1955 - 4441 3055

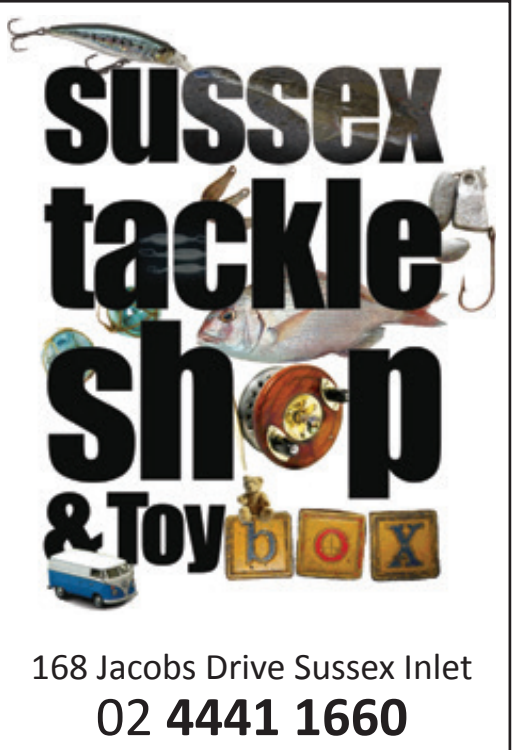
Op Shops

Inasmuch Opportunity Shop

195 Jacobs Dr. - Bric-a-Brac
4441 1666

Seek & Find Op Shop

2/176 Jacobs Dr. Clothing, linen,
bric-a-brac - 4441 3605



The advertisement for Sussex Tackle Shop & Toy Box features a collage of fishing-related items including a lure, a fish, a fishing reel, and a boat. The text 'sussex tackle shop & Toy box' is prominently displayed in a bold, black, sans-serif font. The word 'Toy' is written in a smaller font size and is integrated with three wooden blocks containing the letters 'b', 'o', and 'x'. Below the text, a small blue and white toy bus is visible. The entire advertisement is enclosed in a black rectangular border.

168 Jacobs Drive Sussex Inlet
02 4441 1660

Pet Supplies

Sussex Inlet Veterinary Surgery

179 River Rd - 4441 1011

Spar Supermarket

Jacobs Dr. - 4441 2264

Pharmacy/Medical

Sussex Inlet Pharmacy

192 Jacobs Dr. All prescription requirements, gifts, home health specialists, Medicare Agent
4441 2444



Spar Supermarket

Jacobs Dr. - 4441 2264

Seafood

Fresh seafood is available from the Seafood van on Jacobs Drive. Prawns and oysters also available from Pelican Shores, Batesy's and at Spar Supermarket in holiday periods



- Sussex Inlet District Visitors Guide

Speciality Stores

King Of The Pack

176 Jacobs Dr. - 4401 2455

Lions Book Shop

174 Jacobs Dr. - Second hand books

Sussex Inlet Golf Club

7 Golfcourse Way - kiosk, pro-shop.
4441 2259

Sussex Treasure Box

3/176 Jacobs Drive
Bargains, homewares & gifts

Stationery/Newspapers

Cudmirrah General Store, Café & Woodfire Pizzeria

14 Goonawarra Dr. - Groceries, bait,
petrol, café. - 4441 3006

Inlet Newsagency

5/172 Jacobs Dr.
4403 7730



WHAT YOUR CTC HAS TO OFER YOU

- * PUBLISHING OF YOUR COMMUNITY NEWSPAPER - weekly
- * ADVERTISING - In the Inletter
- * CLASSIFIEDS - For Sales, Lost and Found
- * COMMUNITY ANNOUNCEMENTS - In our free community page
- * COMPUTER/ INTERNET USE - For public at reasonable rates
- * BE CONNECTED - Join for Free
- * DROP IN CENTRE - Help with all devices 2nd last Thursday monthly - Free
- * GENERAL OFFICE SERVICES - emails, photocopying, resumes, brochures, photocopying, typing

Shop 7/168 Jacobs Drive

Sussex Inlet 2540

Phone 02 4441 0921

Email: sussexilectc@exemail.com.au

ABN 67618446261

Sussex CTC

The home of the Sussex Inletter also offers a range of office services and speciality products including: Email, scanning, Internet, laminating, photocopying, phones, USBs typing, resumes and general secretarial work. Local calendars recipe books, jams and candles.
Phone 02 4441 0921

Sussex Inlet Post Office

196 Jacobs Dr. - Stationery, various banking agencies, instant photos and Darrell Lea Chocolates - 4441 2099



Sussex Inlet Service Station

1 Jacobs Dr. Petrol, oil, bait, groceries, newspapers. - 4441 2193

Supermarket/Food Supplies

Cudmirrah General Store, Café & Woodfire Pizzeria

14 Goonawarra Dr. - Groceries, bait, petrol, café. - 4441 3006

Dinh Hot Bread & Cake Shop

1/183 Jacobs Dr Sussex Inlet
Ph: 4441 1385
Rolls, bread, cakes, Vietnamese rolls and cold drinks.

Inlet Bakery and Café

next to Spar - Jacobs Dr.

Inlet Butchery

181 Jacobs Dr.
4403 7732 – 0420 388 784

Spar Supermarket

Jacobs Dr. - Meat, vegetables, groceries, delicatessen – 4441 2264

Sussex Inlet Service Station

1 Jacobs Dr. Petrol, oil, bait, groceries, newspapers. - 4441 2193

Surf and Beach

Ocean & Earth Retail Surf Shop

Cnr of Sussex Inlet Rd and The Springs Rd - 4441 2482



Sussex Surf Shack

6/172 Jacobs Dr. - Surf wear & accessories – 4441 3359

Trades and Services

Accountants

Bosco Accounting

Phillip J. Kennedy - 185 Jacobs Dr.
4441 3733
admin@boscoaccounting.com
www.boscoaccounting.com

SLB Accounting Services

3/196 Jacobs Dr.
4441 1298 – 0417 064 127
slbaccounting@bigpond.com

Aged Care

Inasmuch Community Inc.

Offering high quality residential aged care needs including respite and high care services for dementia and palliative care
Phone 44411666
consumer@inasmuch.org.au
www.inasmuch.org.au



Inasmuch Aged Care Services

High quality residential aged care services tailored to meet your needs

Services include:

- Residential care and short term respite
- Specialist high care unit for quality dementia and palliative care
- Day centre services

Phone 02 4441 1666

Email consumer@inasmuch.org.au

Air Conditioning

JDAir

Air Conditioning Sales & Installations
Josh - 0400 806 286
www.jdair.com.au

Just Air

Air Conditioning - Ross Humble
4441 3177 - 0497 946 472

AMBULANCE – 000

Appliance Repairs

ASAP

Appliance repairs
Wayne - 4441 0350 - 0409 572 410

BF Services

Fridges, air conditioners, dishwashers, ovens. Locally owned in Sussex Inlet and fully licenced - Ph: 0449 124 212

ATMs/Banking

ATMs inside

Spar Supermarket
Sussex Inlet Bowling Club
Sussex Inlet Liquor
Sussex Inlet RSL
Sussex Inlet Service Station
Sussex Tavern

ATMs outside

Real Property Agents
Sussex Inlet Neighbourhood Centre

Antennas

Vision Antennas & Audio

Sion Wessell - 4441 3838 - 0405 385 736
visionantennas@bigpond.com

Asbestos Removal

Coastline Asbestos Removal

0411 566 379

mickndani@gmail.com.au

Sussex, Bay & Basin Metal Roofing

Asbestos roof removal

4441 2327 - 0422 143 755

Banking

Post Office

Bank@Post is an agency service provided by Australia Post on behalf of over 80 financial institutions including CommBank, Westpac, NB and ANZ. Offering services for individuals or businesses to make withdrawals, deposits, bill payments and balance enquiries.

2/196 Jacobs Dr. - 4441 2099

Beauty

The Beauty Salon

11 Thora Street, Sussex Inlet
Nails, Waxing, Spray Tan, Facials
Phone or text 0491 648 414 for an appointment

Bicycle Hire/Repairs

Sussex Inlet Marine Centre

4441 2086

Boat Building

Ian's Carpentry & Boat Building

4441 3095 – 0412 450 648

plain_sailing@bigpond.com

Boat Hire

Riviera Caravan Park

4441 2112 - canoes only

Pelican Shores Café & Marina

4441 3099 - boats & paddleboards

Sussex Inlet Marine Centre

4441 2086 – boats/canoes/kayaks

Sussex Inlet Pontoons

0414 803 644

www.sussexinletpontoons.com.au



Bowls

(Courtesy bus available from both venues)

Sussex Inlet Bowling Club

4441 2087

Sussex Inlet RSL Club

4441 2076

Bricklayers

Ian Boyton

4441 1171 - 0411 751 880

Parth Bricklaying Pty Ltd

4441 2921 - 0427 412 924

Sussex Inlet Brick & Block Laying Pty Ltd

Brett Fletcher - 0411 335 347

sibablock@gmail.com



Builders

BSK Building and Carpentry

Stephen Kelly- 0431 168 558
Ben Kelly - 0421230 497
Email: bskellybuild@gmail.com

Lukas Builder Pty Ltd

0402 159 478
lukasbuilders@optusnet.com.au

J.E.J. Building – Jay Johnson

0421 324 060
jejbuilding@hotmail.com

Ohana Homes

Brendan Smith 0416 095 659
brendan@hotmail.com

Riviera Building & Construction Pty Ltd.

Michael Jones - 0407 009 611
rivierabuilding@westnet.com

Rohan Daley

0422 669 326
rohan.daley@y7mail.com

S.I.R. Homes Pty Ltd

Peter van Ovost - 0421 192 498

Sureline Building Group

Jamie Allan - 0422 172 978
jamieallan@outlook.com



Building Supplies/Hardware

Sussex Inlet Hardware & Building Supplies

191 Jacobs Dr. - 4441 1200
www.thriftylink.com.au/store/sussex_inlet/

Isons

02 4421 4288
Delivery to Sussex Inlet 4 days/week

Canoe Hire

Sussex Inlet Marine Centre

4441 2086

Riviera Caravan Park

4441 2112



Car Detailing

G & F Car Clean & Detail

Greg Freeman - 0401 155 379

Rob's Mobile Bumper Repairs

0432 161 457
robsmobilebumperreparis@gmail.com

Carpenters

BSK Building and Carpentry

Stephen Kelly- 0431 168 558
Ben Kelly - 0421230 497
Email: bskellybuild@gmail.com

Cannon Carpentry

Jeff Cannon
4441 1629 - 0449 905 586

David Brady Carpenter & Joiner

0499 117 942
davidbradycarpenter@yahoo.com.au

Fix This Build That Carpentry

0402 153 700
fixthisbuildthatcarpentry@gmail.com

Harbrow Carpentry & Asbestos Removal

Mick Harbrow - 0411 566 379

Ian's Carpentry & Boat Building

0412 450 648

plain_sailing@bigpond.com

Jarrad Severino

0488 798 444

Leigh Barnett Carpentry

0401 424 240

P & S Carpentry Services

Peter Nicol

4441 3703 - 0427 206 640

peternicoll@54.com

Stuart Hill - Carpentry & Plastering

0418 848 241 - 4441 1256

Carpet Cleaning

The Carpet Guy

Carpet & Upholstery Cleaning

0437 757 707

www.carpetguy.com.au

1800 776 373

Cat Grooming

Sussex Inlet Vet

179 River Rd - 4441 1011

Chemist

Sussex Inlet Pharmacy

192 Jacobs Dr. - 4441 2444

Child Care

Sussex Inlet Early Learning Centre

12 Murre St, Sussex Inlet

02 4441 3483

sussexinletlc@gmail.com

c-Verse One Tree Community Service

1800 919 995 - enrolments@onetree.org.au

Before & after school care & vacation care

Church's & Welfare Services

Anglican

Iverison Rd - 4441 2002

Sunday 9.30am, Evening 5.30pm (6pm Dec/Jan)

Catholic

Banksia St. - 4455 1313

Saturday 5pm - Wednesday 8.30am

Christian Life Centre (AOG)

At the Community Church Sunday

10am - 0412 418 577

St Vincent De Paul

0472 548 073

Cinema

Historic Inlet Cinema

4441 2884 - www.inletcinema.com.au



Civil Celebrant

Broni

0427 725 831

bronwyngalea@gmail.com

Melissa Sheehy

Marriage Celebrant/JP

0412 671 878

melissasheehy.celebrant.gmail.com

Cleaning

Inlet Laundry & Cleaning Services
0414 268 203

K Pow - Cleaning & Organising
Kiri - 0409 711 197 - 0411 779 911

Sussex Cleaning Co.
Barb - 0434 213 370
barb@sussexcleaning.com.au

Clubs

Sussex Inlet Bowling Club
St Georges Ave, Sussex South
4441 2087

Sussex Inlet River Dragons
Email: sirdinfo2023@gmail.com
Paddling on Tue & Thur 3pm, Sat 9am,
meet at RSL Boatshed



Sussex Inlet Lions Club
Laurie Stretton – 0437 038 011

Sussex Inlet Men's Shed
0417 420 920



Sussex Inlet RSL Club
Jacobs Dr., Sussex Inlet - 4441 2076

**Sussex Inlet RSL
Sailfish Fishing Club**
Joan Dickson – 0421 250 894
joan.dickson@bigpond.com

Sussex Inlet & Basin Yacht Club (sibyc)
0413 617 083
www.sibyc.com.au

Computer & Internet Access

**Communication Technology Centre
(CTC) - Home of the Inletter**
7/168 Jacobs Dr. - 4441 0921

RSL
Free WiFi - Internet kiosk - 4441 2076

Computer & Internet Services

Ian's Computer Repairs & Sales
4441 3095 - 0412 450 648

Sussex Inlet Computers
4441 0559

Wi-Net Communications
Alan - 0408 464 623

Concreters

All Terrain Landscaping
Darren Pullan - 0411 149 800

Berrara Beach Concreting
Peter Dunnett - 0419 232 605
petemary3@bigpond.com

Coastal Concrete Pumping
Brad Wood - 0427 229 909

East Coast Constructions P/L
Justin Omeara - 0409 229 358
justinomeara3@outlook.com

J Bourke Concrete Services
Jake & Rob Bourke
0421 794 854 - 0458 722 455

Rob Kemp
0412 610 733

Conveyancers

Billie-May Ewings
4408 3030
bm@bmeconveyancing.com.au
www.bmeconveyancing.com.au

South Coast Conveyancing
1/185 Jacobs Dr - 4441 2563
4441 1686 - 0400 041 203
www.kennedycooke.com.au

Southern Property Transfers

Leah Payne - 4443 4240
www.southernpropertytransfers.com.au
leah@southernpropertytransfers.com.au

Dance Classes

Chris Edwards School of Dance

Sussex Inlet - Ph: 0427 422 462

Dentists

Dr Penelope Wilson

117 Jacobs Dr. - 4441 2504

Disability Assistance 4421 4861

Doctors *(see Medical Centres)*

Dog Grooming

Coastal Pooches-Dog Grooming

Phone 0476 156 630



Dirty Dog Depot

Maxine - 0409 176 625

Fidos K9 DIY Dogwash

\$10 Dogwash! - Neilson Rd -
Alongside Cellar Hill Bottleshop

Kim's K9 Klenz

0467 564 565

Sussex Inlet Vet

179 River Rd - 4441 1011

Electricians

Beck Electrical Services

Phillip Beck 0414 632 797
beckelectrical@gmail.com

Coast Wide Electrical

Dylan Smith - 0410 461 150

Danny Douglas Electrical

4441 1620

Darren Streeter

0405 577 983

Josh Dunn

0400 806 286 - joshdnw@gmail.com

Emergency Services

Ambulance - 000

Fire Brigade - 000

Sussex Inlet RFS – 4441 1101

Marine Rescue

Radio Room - 4441 3555



NRMA - 131 111

Road Service/Breakdown Service

ORRCA - Marine Mammal Hotline

02 9415 3333 - www.orrca.org.au

Police - 000

Sussex Inlet Police - 4441 2665

Emergency Services (Cont.)

Nowra Police - 4421 9699

**Police Assistance Line (PAL)
131 444**

**Crime Stoppers (anonymous)
1800 333 000**

SES - 132 500

**Wildlife Rescue South Coast
0418 427 214**

Excavations & Tippers

Swanhaven Excavations
Mark Wroe – 0402 290 895
swanhavenexcavations@hotmail.com

Rays Tipper Service
Ray Stein – 0437 034 710
raystein1@hotmail.com

Exercise & Fitness Classes

**Mad About Fitness, Pilates &
Sussex Inlet Stand Up Paddle**
Madeline Rayner - 0421 120 376
www.sussexinletsup.com

Gym & Fitness Wandandian
May Braap - 0405 194 000
gafwandandian@gmail.com

Exercise Equipment

*Placed along cycleway off Gordon Street
(near RSL Club)*

Fencing

Better Fences
Nathan Todhunter - 0410 579 075
info@betterfences.com.au

Galaxy Fencing Contractors
R. Lidbetter
0412 006 300 - 0423 047 173

Inlet Fencing

Ben Whipp - 0422 569 550
www.inletfencing.com.au

Fibreglass Repairs

**Rob's Mobile Bumper Repairs
Fibreglass Repairs**
0432 161 457

Fire Services

Dynamick Fire
0477 455 073
02 4822 4141
kim@teamdfi.com.au
www.dynamickfire.com.au

Flooring

Coastal Flooring
Dean Stanwell – 0418 222 903

N & B Flooring
Daniel - 4441 1622 - 0411 029 776

Fire Brigade - 000

Fuel

Cudmirrah General Store
Goonawarra Drive Cudmirrah
Phone: 4441 3006

Pelican Shores Café & Marina
28 Sussex Rd, South Sussex
4441 3099



**Sussex Inlet Marine Centre
& Kiosk**
River end of Jacobs Dr. - 4441 2086

Sussex Inlet Service Station
1 Jacobs Dr. - 4441 2193

Function Rooms and Halls for Hire

Community Hall

Thomson St
(bookings @ Sussex Tackle Shop)
4441 1660

Cudmirrah Hall

Shoalhaven City Council - 4429 3111

Neighbourhood Centre

Jacobs Dr. - 4441 2003

Sussex Inlet Bowling Club

St Georges Ave - 4441 2087

Sussex Inlet RSL

Jacobs Dr. - 4441 2076

Sussex Inlet RSL Sub-Branch

Nielson Rd - 4441 2548

Sussex Inlet Tavern

River Rd - 4441 0391

Gardens

Cudmirrah Community Garden

Matt Wells: 0429 669 393

Men's Shed Community Garden

0417 420 920



Glazier & Glass Repairs

Sussex Inlet Glass

Pete – 0475 405 020

Golf

Sussex Inlet Golf Club

Golfcourse Way - 4441 2259
www.sussexinletgolf.com.au



Graphic Design

Scott Morgan - Multimedia Design

0414 785 776
info@scottmorgan.com.au
www.scottmorgan.com.au

Hairdressers

Cut 'N' Dry

Janene French (Wed-Thurs-Fri)
32 Ellmoos Ave - 0421 382 482

Exquisite Hair

3/191 Jacobs Dr. - 4441 3296

Sonia's around the Bay Mobile Hair

Cutting Service - 0422 489 171

Inlet Hair Fashion

5/183 River Rd - 4441 2129

J D Hair

86 Suncrest Ave - 4441 1903



Handyman/Home/Garden & Lawn Services

Canfix Handyman

Robert Carr - 0429 159 069

Ed's Property Maintenance

0417 496 793

Inlet Tree Services

Mitchell Pope & Jackson Daley
0439 005 464

Island Lawn and Property Services

0447 838 384

Josh's Lawnmowing

Josh Brien - 4441 3274 - 0401 068 469

K Pow - Handyman Service

Kiri - 0409 711 197 - 0411 779 911

Paul Farrow

4441 1437 - 0403 509 433

Peter Shield

0403 666 062

Reef Home Maintenance

Steven Ings - 0411 485 519

Scott Miller

0409 316 714
sossabling@optusnet.au

The Lawn Guy

David Ward - 0434 629 111

We Care Garden & Property Maintenance

Ben Turner - 0402 584 115

Hearing

Australian Hearing

Lockhart Medical Centre
180 Jacobs Dr - 131 797 (for appt.)

Jervis Bay Hearing

4441 8886

Health Direct Australia

Registered nurse available for
assessment 24 hours a day
1800 022 222

Home Care

Inasmuch Home Care Services

4441 1666

homecare@inasmuch.org.au

www.inasmuch.org.au



Inasmuch Home Care Services

your local service providing flexible and responsive services tailored to meet your needs

Services include cleaning, personal care, gardening, food, laundry, shopping and health care

Phone 02 4441 1666

Email homecare@inasmuch.org.au

Hospitals

Milton Hospital

Princes Highway, Milton - 4455 1333

Nowra Private Hospital

Weeroona Place, Nowra - 4421 5855

Shoalhaven District Memorial Hospital

Shoalhaven St, Nowra - 4421 3111

Information Services

Sussex Inlet

Neighbourhood Centre

170 Jacobs Drive - 4441 2003

Provides a range of community services including: Centrelink Access Centre, Tourism information.



Jetties

Mooring Poles, Jetties, Wharves & Jetties

Rod Jones - 0428 783 225

Nathan Lord - 0422 708 639

Justices of the Peace

[jp.lawlink.nsw.gov.au/public/
welcomePublic.do](http://jp.lawlink.nsw.gov.au/public/welcomePublic.do)

Andrew Sorial

Sussex Inlet Pharmacy - 4441 2444

Billie-May Ewings

Billie-May Ewings Conveyancing
4408 3030

Cathy Bowman

4441 2313 - 0401 441 111

David Jones

4441 2915

Emil Sidhom

Sussex Inlet Pharmacy - 4441 2444

Kerry Ingram

4441 1166

Samantha Betts

SLB Accounting Services - 0417 064 127

Melissa Sheehy

0412 671 878

Todd Barkley

Raine & Horne - 4441 2121

Kayak Hire

Sussex Inlet Marine Centre

4441 2086

Riviera Caravan Park

4441 2112

Kitchens & Cabinetry

Mr Makeover

Jeff - 0414 975 153

info@mrmakeover.com.au

P.J. & C.A. Brown

4441 1086 - 0414 808 293

Shoalhaven New Image Kitchens

4421 4411

info@newimagekitchens.com.au

Lachlan Poole Memorial Health Centre

(Sussex Inlet Community Health Centre)

Nielson Rd - 4443 7646 - 1300 792 755

Community Nurses, JB Hearing,
Domestic Violence Support, Women's
Health Nurse, Counselling & Early
Childhood Clinic.

Landscaping

All Terrain Landscapes

Darren Pullan - 0411 149 800

dpullen64@hotmail.com

Parth Bricklaying Pty Ltd

Rob Parth - 4441 2921 - 0427 412 924



Laundromat / Laundry Services

Laundry Services and Linen Hire

Laundry services and Linen Hire

5/196 Jacobs Dr. - 0414 268 203

inletlaundry@outlook.com

Lawyers

Kennedy & Cooke Lawyers

Dianne L'Estrange (Notary Public)
164 Jacobs Dr. - 4441 2563

Learn to Drive

South Coast Learn to Drive

0459 691 530 - 0459 691 531
southcoastlearntodrive@gmail.com

MARINE RESCUE - Radio Room - 4441 3555

Marriage Celebrants

See *Civil Celebrants*

Massage

Chinese Massage Therapy Clinic

192 Jacobs Drive – 0404 860 610

Shoalhaven Mobile Remedial Massage & Therapeutic Massage

Robyn Whittaker
4441 2625 - 0418 235 101
robynmaree@gmail.com

Thai Massage

Suite 4 /191 Jacobs Drive Sussex Inlet
Phone: 0466 969 955

Meals on Wheels

196 Jacobs Dr 4441 3745 - 4455 2861

Mechanical Repairs

Car, Marine & Truck Electrics Mobile Auto Electrics

Dave Eggins - 0422 142 410

Moby's Mobile Mechanical Repairs

Jamie Moberget - 0412 301 967
mobysmechanical@gmail.com

Rob's Mobile Bumper Repairs

Rob Mulholland
4441 1744 - 0432 161 457

Sussex Inlet Mechanical Services

2/4 Flood Avenue
Cars, boats and lawnmowers
4441 1955 - 4441 3055



Medical Centres

Sussex Doctors

180 Jacobs Dr - 4441 2786

Sussex Inlet Medical Centre

164 Jacobs Dr - 4441 2675

Sussex Inlet Medical Practice

7/196 Jacobs Dr – 4441 3900
Dr Sarah Ibrahim

Mooring Poles – see Jetties

NRMA

Insurance, Motoring & Services
4 Flood Ave - 4441 2207 - Road
Service/Breakdown Service – 131 111

Optometrist

Sussex Optical

Martin Young - 1/196 Jacobs Dr.
4441 2417

ORRCA

24 hour Marine Mammal Incident &
Sighting Hotline: 02 9415 3333
www.orrca.org.au

Painters

Adam Jacobs Painting & Decorating

0428 897 966
adamjacobs79@hotmail.com

Chris Madden's Painting & Decorating

0416 040 570
chrismadden425@gmail.com

Painter & Decorator - T Nau
0416 089 496

Jervis Bay Painting Services
0432 124 544

Pathology

Southern IML Pathology
164 Jacobs Dr. - 4441 2836

Southern IML Pathology
180 Jacobs Dr. - 4441 2786

Pest Control

CSI Pest Control
Mark Boyle - 4441 1555 - 0407 441 278

Regional Pest Services
Ken 0429 126 752 or 0437 322 708
regionalpest17@gmail.com
www.regionalpestservices.com.au

Photography

Air Appeal Photography
Dean Holland – 0418 484 066
Video Drone Footage

Physiotherapist

Sussex Inlet Physiotherapy
Wendy Larcomb
2/159 Jacobs Dr - 4441 0669
sussexphysio@gmail.com



Plasterers

Stuart Hill
0418 848 241 - 4441 1256

Peter Penkow
Phone: 0412 057 142

Playgroups

St Mark's Playgroup
4441 1759 - 0428 823 779

Splash (Anglicare) Playgroup
0423 606 559



Plumbers

Afterdark Plumbing
Greg Turner
4441 1053 - 0412 480 970

Ian Brown Plumbing
4441 2507 - 0418 631 562

J&T Dale plumbing
1300 846 264

Marc Daley Plumbing
0423 682 274

Martin Doyle
0412 715 264

Shane Turner
0402 712 064

Trust Plumbing & Consultancy
0417 030 181
adam@trustcovsultancy.com.au

W. J. Griffiths Plumbing
Warwick Griffiths - 0418 279 273



Podiatrist

Mt Keira Podiatry

Paul Buttel - 164 Jacobs Dr.
4226 5705

Samuel Gaffey Podiatry

Lockhart Medical Centre
180 Jacobs Dr.
4454 4155 (for appointments)

POLICE - 000

Sussex Inlet Police - 4441 2665

Nowra Police - 4421 9699

**Police Assistance Line (PAL)
131 444**

**Crime Stoppers (anonymous)
1800 333 000**

Pontoon Hire

Sussex Inlet Pontoons For Hire

Danny Payne – 0414 803 644
www.sussexinletpontoons.com.au

The Blue Whale (Go Hire a Boat)

0412 446 247

Postal Services

Sussex Inlet Post Office

196 Jacobs Dr. - 4441 2099

Public Telephone

Public Telephone

Berrara Rd, Berrara

Public Telephone

Cnr River Rd & Jacobs Dr.
& opposite NAB

Public Telephone

Hoffman Dr. Swanhaven

Public Toilets

Berrara

near Berrara Creek - Berrara Rd
(Disabled access)

Chris Creek

Chris Creek Bridge, River Road

Cudmirrah

near Cudmirrah Hall in Koolyn Dr

Errol Bond Reserve

in Goonawarra Dr.

Sussex Inlet

behind Cinema in Jacobs Dr.
(Disabled access)

Finkernagel Oval

in Sandpiper Way

Ellmoos Reserve

near RSL in Jacobs Dr.

East of Boat Ramp

Sussex Inlet Waterfront Reserve in
Nielson Lane

Sussex Inlet South

near Marine Rescue in Sussex Rd

Lions Park

in Edgewater Ave
(Disabled access) (RV Dump station)

Sporting Complex

in Thomson St

Beside Surf Club

in Pacificana Dr.

Swan Lake

Dyball Reserve in Yarroma Ave,
Swanhaven

Ski Beach

on Springs Rd
(Disabled access)

SUSSEX INLET PONTOONS



**Call us on
0414 803 644
or book
online**



sussexinletpontoons.com.au

Pressure Cleaning

**Pressure Cleaning
Painting - E & T Nau**
0416 089 496

Rangers

Shoalhaven City Council Rangers
4455 3826

Real Estate Agents

Dunes Lifestyle Sussex Inlet
157 Springs Rd – 4441 2222
www.hometownaustralia.com.au

Snappy Gums Sussex Inlet
187 Springs Rd – 4441 2222
www.hometownaustralia.com.au

Golfcourse Way Village
15 Golfcourse Way
0421 192 498
golfcoursewayvillage@gmail.com

L.J Hooker
1/159 Jacobs Dr.
75 holiday rentals
4441 2900 - 4441 2135
sussexinlet@ljh.com.au
www.holidaywithus.net.au

Pearl Property Agents
"The way real estate should be"
0430 117 048
pearlpropertyagents@realty.com.au

Raine & Horne
2/170-172 Jacobs Dr.
50 holiday rentals
4441 2121 - www.raine-horne.com.au

Real Property Agents
2/168 Jacobs Dr. - Holiday rentals
4441 3444
www.realpropertyagents.com.au

Recycling & Waste Depot

The Springs Road - Open Fri, Sat, Sun,
Mon (9am -3pm). Open 7 Days - Dec
26 - Jan 31.

Removalist

Sussex Inlet Removals
Phil Meredith
4441 0180 - 0412 483 065

Retirement Living

Inasmuch - Retirement Village
59 high quality retirement village units
4441 1666
www.inasmuch.org.au



Inasmuch Retirement Village

Enjoy your retirement with Inasmuch

- 59 high quality retirement village units and villas
- Access to activities and bus trips
- easy access to health and home care services

Prices range from \$300,000 to \$360,000 with flexible purchase options

Phone 02 4441 1666

Email consumer@inasmuch.org.au

Dunes Lifestyle Sussex Inlet
157 Springs Rd – 4441 2222
www.gatewaylifestyle.com.au

Snappy Gums Sussex Inlet
187 Springs Rd – 4441 2222
www.gatewaylifestyle.com.au

Golfcourse Way Village
15 Golfcourse Way
0421 192 498
golfcoursewayvillage@gmail.com



REAL
PROPERTY AGENTS
The South Coast's Most Trusted Opinion

**Sales - Rentals - Holiday Accommodation - Residential/Rural
Retail - Commercial - Industrial - FREE Market Opinions**



Ross Earby
Principal/Licensee
Class 1 Agent



Alison Murray
Office Manager
Class 2 Agent



Renee Pousini
Property Officer



Emily Calladine
Holiday
Accommodation
Manager



Rachel Smith
Administration
Assistant

**We're just
unbeatable!**

We're selling as fast as we
are listing!

If you're thinking of selling
your property call our
eager team of professionals
today for a speedy sale.



Shop 4-5/168 Jacobs Drive,
Sussex Inlet NSW 2540
Phone: 02 4441 3444
Email: realpropertyagents@gmail.com
Web: www.realpropertyagents.com.au

**Free
Market Appraisal**

Call us on **4441 3444** now.

Roofing

Sussex, Bay & Basin Metal Roofing

4441 2327 - 0422 143 755

Rubbish Tip

see *Recycling & Waste Depot*

Sailing

Sussex Inlet Basin Yacht Club

0408 241 130 - sibyc.com.au



School

Sussex Inlet Public School

Thomson Sussex Inlet - 4441 2053
www.sussexinle-p.schools.nsw.gov.au



School Museum

School Museum

Sussex Inlet Public School
Thomson St Viewed by arrangement
Val Williams - 0407 210 016

Security Doors & Windows

Bay & Basin Security Doors (& Windows)

Daniel - 4443 6048

www.bayandbasinsecuritydoors.com.au

SES - 132 500

Sign-writers

Good Signs

Call Andrew 0431 30 30 40

www.goodsigns.com.au

South Coast Signs

Steven Douglass - 0431 159 162

Your Representatives

Federal Member for Gilmore:

Fiona Phillips - 4423 1782

fiona.phillips.mp@aph.gov.au

State Member for South Coast:

NSW elections conducted on March
25th to elect a new member

See www.parliament.nsw.gov.au

LOCAL

Shoalhaven City Council - 4429 3111

Shoalhaven City Councillors Ward 3

Mark Kitchener - 0478 882 649

Mark.Kitchener@shoalhaven.nsw.gov.au

Patricia White - 0447 416 329

Patricia.White@shoalhaven.nsw.gov.au

Liza Butler - 0417 829 596

liza.butler@shoalhaven.nsw.gov.au

Muriel D'ath - 0417 819 847

moo.dath@shoalhaven.nsw.gov.au

This list is current at time of printing.

COMMUNITY FORUM

Meet on 3rd Monday 7.30pm at
Thompson Street Hall

Email: secretary@sussexdistrictsforum.com.au

Solar

Schmick Energy

Pete Skewes – 0402 132 800

Spray Painting

Rob's Mobile Bumper Repairs

0432 161 457

Stand Up Paddle Boarding

Sussex Inlet Stand Up Paddle

Madeline Rayner - 0421 120 376

www.sussexinletsup.com

Stand up Paddle Board Hire

Sussex Inlet Marine Centre

River end of Jacobs Dr. - 4441 2086



Storage Facilities

All Storage Sussex Inlet

12 Flood Ave – 0490 396 034

allstoragesussexinlet@gmail.com

Sussex Inlet Storage & Mini Storage

5 Flood Ave. - 4441 2791

Surfing Lessons

JB Surf School

www.jbsurfschool.com.au

0449 266 994



Sussex Inlet Neighbourhood Centre 4441 2003

Community Health Bus, Evergreens, Diabetic Support Group, Cancer Support Group, Craft Group, Centrelink Access Centre, Tele-call Service, Hiring of wheelchairs, commodes, shower chairs, etc.

Tennis Court Hire

Tennis Courts - Thomson St

(bookings @ Sussex Tackle Shop)

4441 1660

Tennis Courts - Lakeside Cabins

& Holiday Village - 4441 2516

Tide Charts

Available at - Sussex Inlet Marine

Centre, The Sussex Tackle & Toy Box

and www.willyweather.com.au



**Storage units from 6 sq metres to
72 sq metres from \$20 per week.**

- ✓ 24 hour access available, 7 days a week.
- ✓ Access code security, alarmed and video surveillance.

Also secure compound parking for cars, trucks, caravans, boats, plant & machinery, containers etc.

Ph: 0490 396 034

12 Flood Ave Sussex Inlet NSW 2540

Email: allstoragesussexinlet@gmail.com

www.allstoragesussexinlet.com.au

Tip

see *Recycling & Waste Depot*

Towing

Sussex Inlet Mechanical Services

4441 1955 - 4441 3055

Trailer Repairs & Service

Bosun Wholesale

Trailer repairs, service & modifications
- 4441 2791

Sussex Inlet Mechanical Services

4 Flood Ave - 4441 1955

Transport Services

Community Health Bus

4441 2003

Plan B - Passenger Service

0433 550 780

Thurs & Fri: 4:30pm until late

Sat & Sun: 11am until late

Premier Motor Service

133 410

www.premierms.com.au

Priors Bus

1800 816 234

www.priorsbus.com.au

Railway - City Rail - Bomaderry

4423 6416

Shoal Bus

4423 2122

www.shoalbus.com.au

Sussex Inlet Taxi Service

0400 444 110 or 4441 1000



Tree Services

Inlet Tree Services

2 Harbord St - 0439 005 464

Neil & Sue Wiggins Trading as

Steve Daley Tree Services

4441 2462 - 0418 457 749

Veterinary Surgery

Dr David Goodwin

179 River Rd - 4441 1011



Wall & Floor Tilers

Clayton Keyword Tiling

4441 3505 - 0413 990 645

G. & A. Elliott

4441 0698 - 0419 713 990

Glenn Negus

0408 428 873

Kyle Cregan

0402 022 499

kylecregan@hotmail.com

Dave Wheeler

0412 709 529

Tou-Can Tiling

Luke Elliott - 0412 446 287

lukeelliott22@hotmail.com

Waterproofing

Riviera Building & Construction Pty Ltd

Michael Jones - 4441 1773



GOLF COURSE LIVING NOW AVAILABLE

Welcome to Sussex Inlet Golf Village. A prestigious new masterplanned community now selling on the stunning South Coast of NSW. The masterplan has been sensitively integrated into the existing landscape of the existing Sussex Inlet Golf Course. The community's location nestled amongst existing bushland, waterways and beaches provides an endless range of healthy lifestyle activities that can be enjoyed by all ages. It is destined to become a benchmark for active healthy living.

Your Life's On Course



Sales & Information Centre
Golfcourse Way, Sussex Inlet
1800 SUSSEX | info@sigv.com.au | sigv.com.au
On Site Agents Open Friday - Sunday 10am - 3pm



Website Design

Scott Morgan - Multimedia Design

0414 785 776

info@scottmorgan.com.au

www.scottmorgan.com.au

Welders

Bosun Wholesale

4441 2791

Metal Fabrication & Welding

Dave Mazzuoli - 0432 217 267

MS Custom Trailers

Mat Sheehy - 0402 602 646


Robert Lidbetter Mobile Welding

4441 1383 - 0412 006 300

 **Scott Morgan**
multimedia design . . .

Professional Design Solutions

Website Design
Graphic Design
Printing • Marketing
Logo Design
and more...

 0414 785 776

 info@scottmorgan.com.au

 scottmorgan.com.au

GOLFCOURSE WAY VILLAGE SUSSEX INLET



Manufactured Homes For Sale

For enquiries: 0490 396 034

Golfcourse Way Village

15 Golfcourse Way, Sussex Inlet NSW 2540

Wildlife Rescue South Coast

www.wildlife-rescue.org.au

0418 427 214 - (24/7)

Snakeaware - Venomous reptile & wildlife management

0431 455 790

www.snakeaware.com.au

Window Cleaner

Bettakleen - T. Valentine

4441 2329 - 0414 714 457

John's Home Window Cleaning Service

4441 3743 – 0418 675 455

The businesses listed here have been extracted from:

www.sussexinlet.nsw.au

For the listings to remain current businesses are requested to email any changes of their listing to:

The Secretary

Sussex Inlet District Chamber of Commerce Inc

sussexinletchamberofcommerce@gmail.com

The information in this booklet is true and complete to the best of our knowledge. The authors/publisher disclaim any liability in connection with the use of this information.



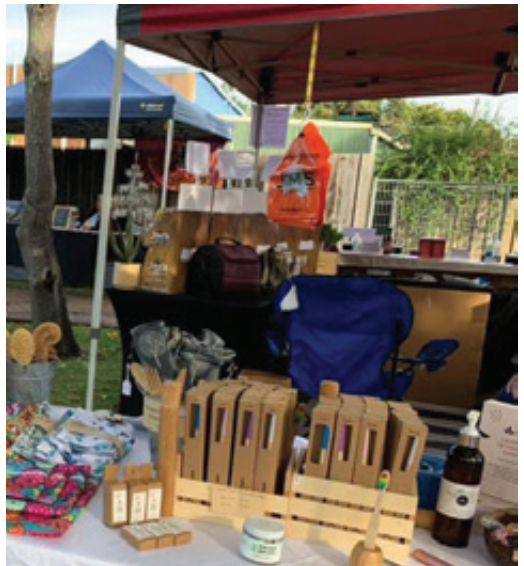
Sussex Inlet

COMMUNITY MARKET

Where the Bush meets the Sea

2nd
Saturday
each month

Great selection of stalls • Plants • Arts and Crafts
Gifts • Fresh Flowers and lots more...



sussexinlet.nsw.au



Sussex Inlet District

CHAMBER OF COMMERCE INCORPORATED

Alliance Partner of
**BUSINESS
NSW**

As a member of Business NSW our Chamber members get FREE advice on Awards, Pay rates, government policy and funding information

The Sussex Inlet and District Chamber of Commerce plays a key leadership role in the community including:

- Support for local business with marketing and promotion.
- Advocacy with Shoalhaven Council for new businesses and to address community concerns.
- Development of a large range of community events to assist our local businesses to increase their financial viability and to offer activities for our local community and visitors.
- Development of funding applications for grants to improve our services and infrastructure.
- Arranging guest speakers from Shoalhaven Council and NSW and Australian Government Services to keep our community up to date.
- Partnerships and collaboration with other Sussex Inlet organisations.

How you can get involved with the Chamber of Commerce:

- Become a member if your a local business - \$60 per year or \$120 for 3 years.
- Become a Friend of the Chamber to keep in touch with the latest information.
- Volunteer for events such as the **Viking Festival**, **Summer at Sussex** and **Winter at Sussex**.

APPLY FOR MEMBERSHIP ONLINE AT
www.sussexinlet.nsw.au/membership-enquiry
Email: sussexinletchamberofcommerce@gmail.com